

PRODUCT DATA SHEET

Product: Fused Magnesia 98.2

Chemical Analysis:

MgO	min.	98.00%
SiO ₂	max.	0.45%
CaO	max.	1.00%
Fe ₂ O ₃	max.	0.50%
Al ₂ O ₃	max.	0.20%
B.D.	min.	3.50g/cm ³

**Physical
Properties:**

grain size: 0 - ca. 40 mm
crystal size: 1210 µ

Date of issue: 06/2014

POSSEHL ERZKONTOR GMBH, Beckergrube 38-52, 23552 Lübeck, Germany
P.O. Box 1633, 23505 Lübeck, Germany
Tel.: +49 (0)451 148 0, Fax.: +49 (0)451 148 340
E-Mail: info@erzkontor.com, Web: www.erzkontor.com



Deutsches Institut
für Feuerfest und
Keramik GmbH

DIFK Deutsches Institut für Feuerfest und Keramik GmbH
Rheinstraße 58 · 56203 Hoeher-Grenzhausen · GERMANY

Possehl Erzkontor GmbH & Co. KG
Bischofstraße 88
47809 Krefeld



Deutsche
Akreditierungsstelle
D-PL-17672-01-00

According to DIN EN ISO / IEC 17025
accredited testing laboratory by DAkkS.
The accreditation applies to the test
methods listed in the certificate.

October 01, 2019
Service: Dr.-Ing. Deinet
Phone: + 49 2624 / 9433-222

Test report 116-769-00
(Page 1 of 12)

Order dated	September 20, 2019 / Mr. Steffens-Tun
Specification of order	Determination of primary crystal size
Sample	Granular material
Sample name	Fused Magnesia – FM 98 LC
Sampling by	Customer
Delivery	September 13, 2019

* The test results relate only to the items tested. The accredited test methods are marked with asterisk.
Without approval of DIFK this report shall only be reproduced in full and unchanged.

Dr.-Ing. Thomas Deinet

Delivered material



Fused Magnesia – FM 98 LC

Delivered material separated into fractions



Fused Magnesia – FM 98 LC / "whitish fraction"



Fused Magnesia – FM 98 LC / "melt fraction"



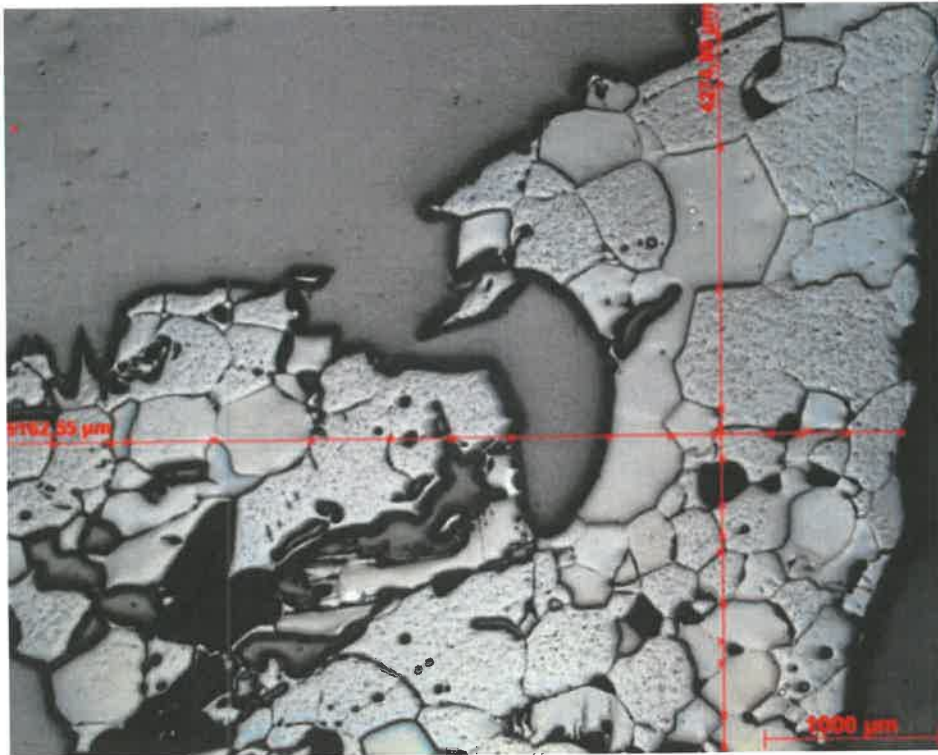
Fused Magnesia – FM 98 LC / "greyish fraction"

Determination of primary crystal size

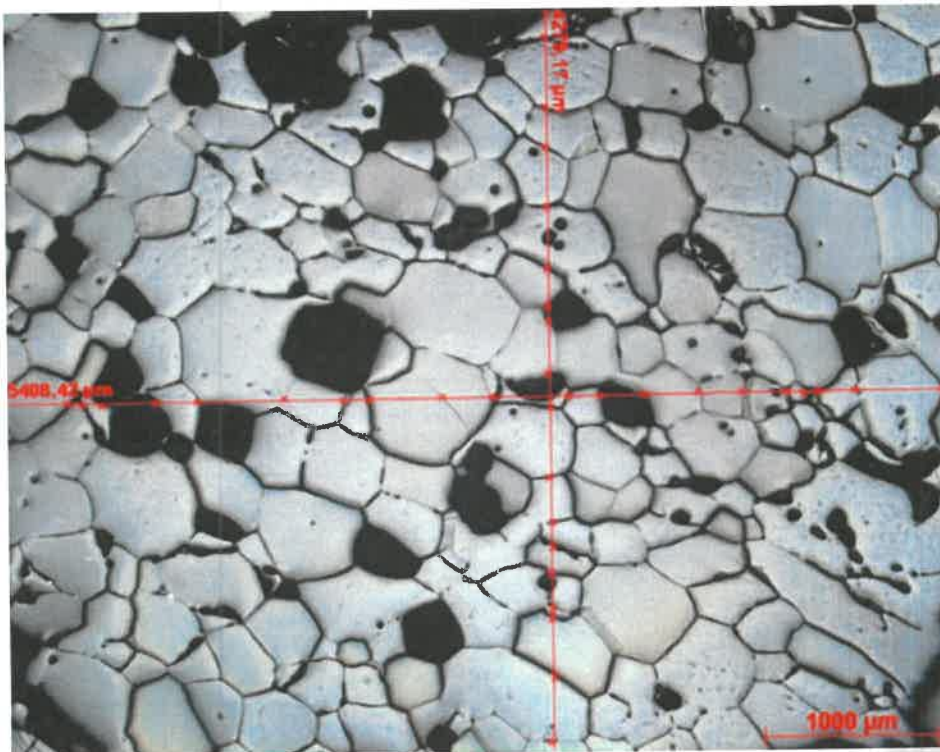
Date of testing: September 30, 2019

Fused Magnesia FM 98 LC	length horizontal [µm]	linear intersection points horizontal	length vertical [µm]	linear intersection points vertical	Ø crystallite size [µm]	
Grain 1	5163	16,5	4275	15,5	477	"greyish fraction"
Grain 2	5408	19,0	4279	18,0	423	
Grain 3	5427	10,5	4314	14,5	660	
Grain 4	5417	13,0	4292	12,0	627	
Grain 5	5399	14,0	4296	12,0	602	"whitish fraction"
Grain 6	5573	10,0	5265	17,0	702	
Grain 7	5473	5,0	4319	3,0	2053	
Grain 8	5417	6,0	4279	3,0	1887	
Grain 9	5376	1,0	4259	1,0	>7804	"melt fraction"
Grain 10	4913	2,0	4264	1,0	>5444	"whitish fraction"
Grain 11	5334	6,0	4150	8,0	1140	
Grain 12	5417	14,0	4285	14,0	561	"melt fraction"
Grain 13	5413	1,0	4042	1,0	>7659	
Grain 14	5138	2,0	4113	2,0	>3747	
Grain 15	5175	1,0	4213	1,0	>7604	
					mean value >2759	standard deviation >2809

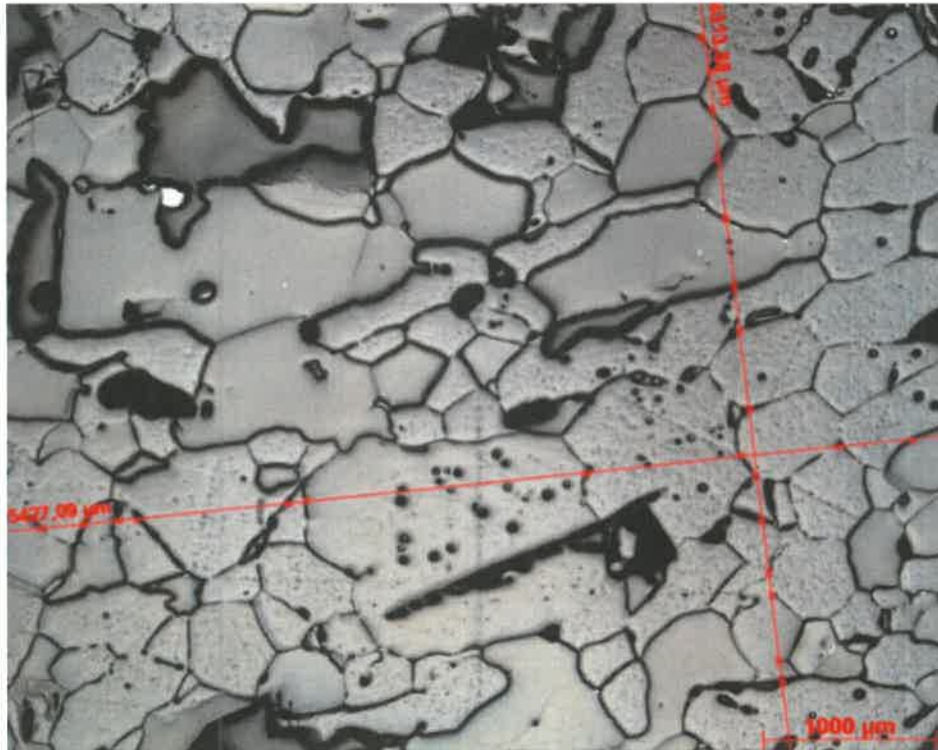
Photos see pages 5 – 12



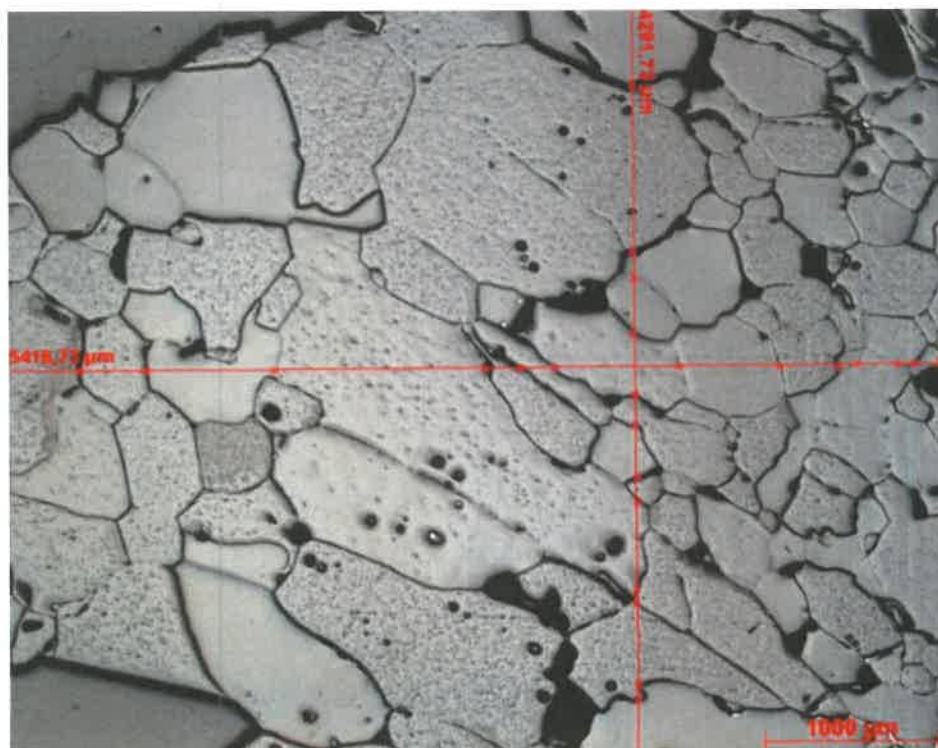
Fused Magnesia – FM 98 LC / "greyish fraction"_grain 1



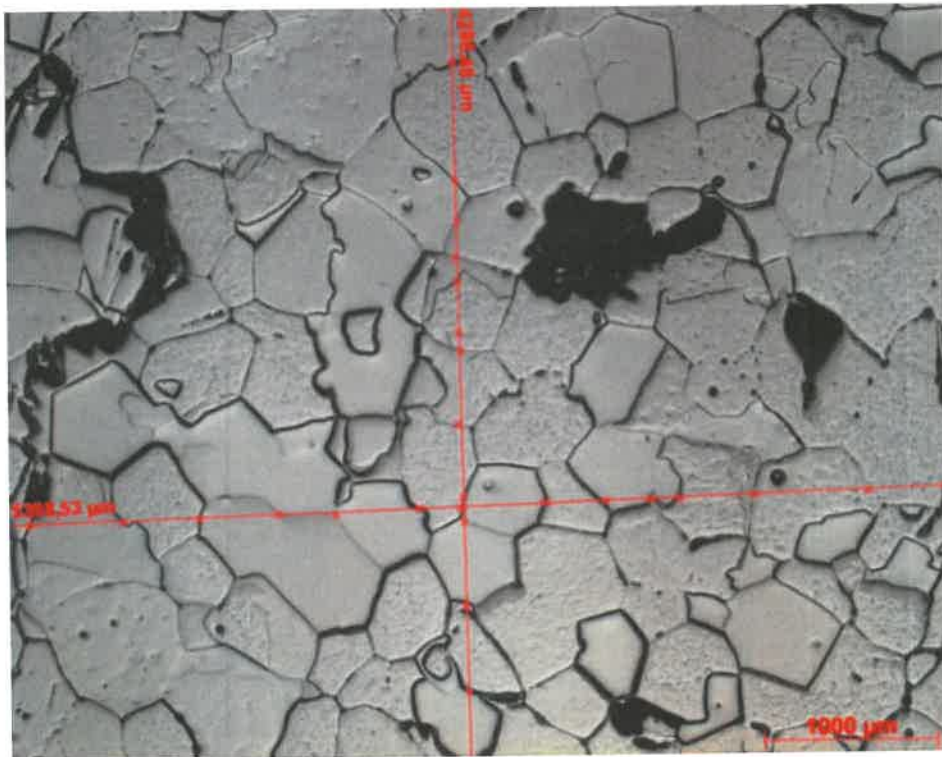
Fused Magnesia – FM 98 LC / "greyish fraction"_grain 2



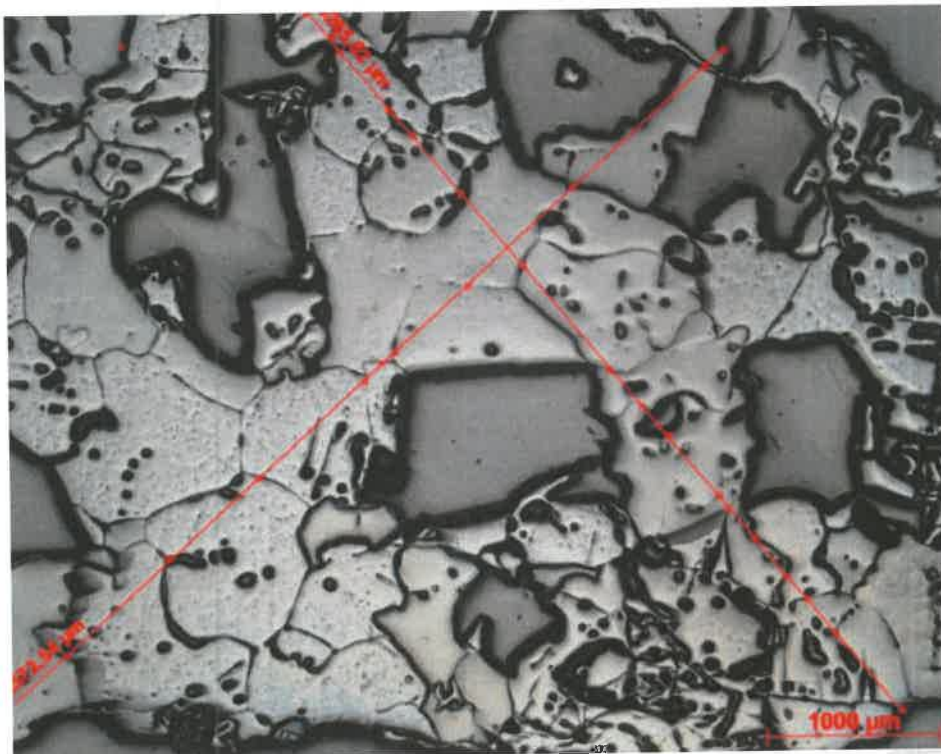
Fused Magnesia – FM 98 LC / "greyish fraction"_grain 3



Fused Magnesia – FM 98 LC / "greyish fraction"_grain 4



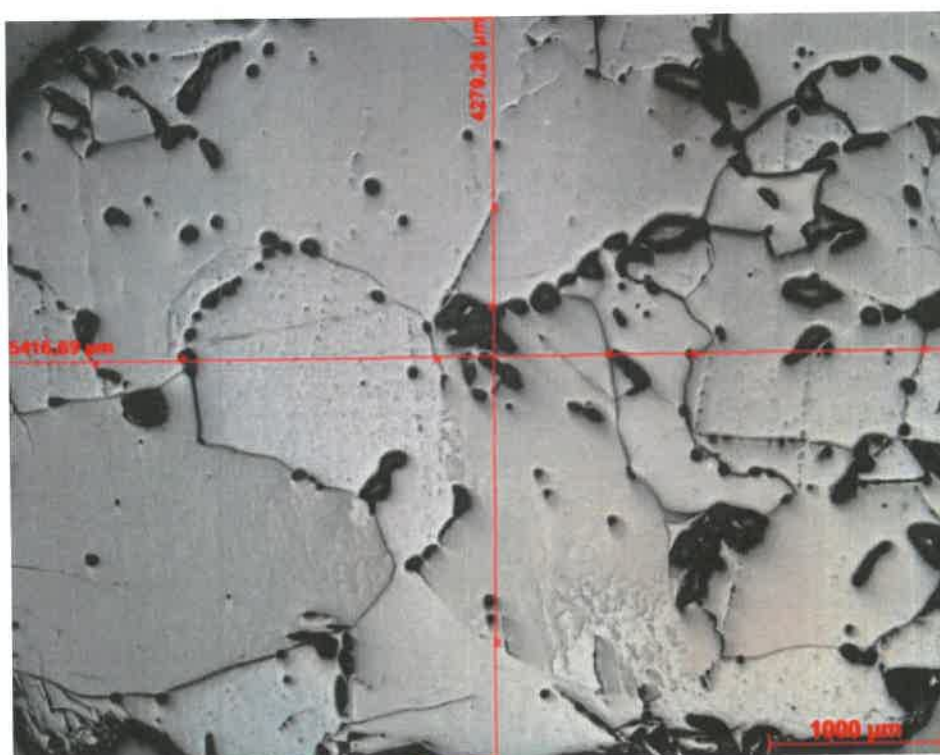
Fused Magnesia – FM 98 LC / "whitish fraction"_grain 5



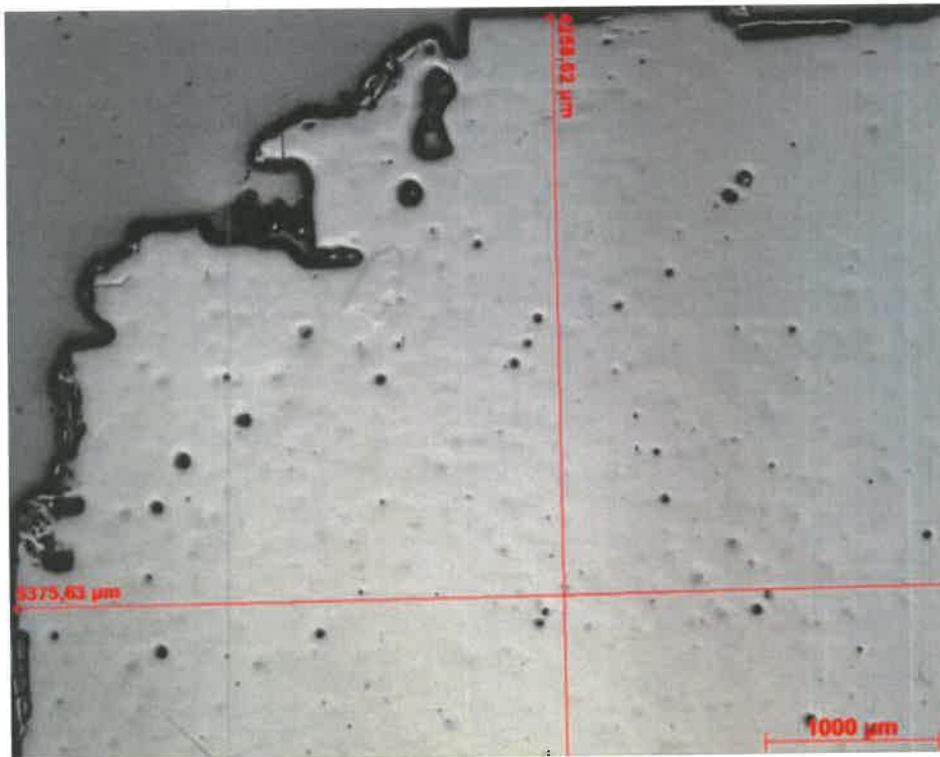
Fused Magnesia – FM 98 LC / "whitish fraction"_grain 6



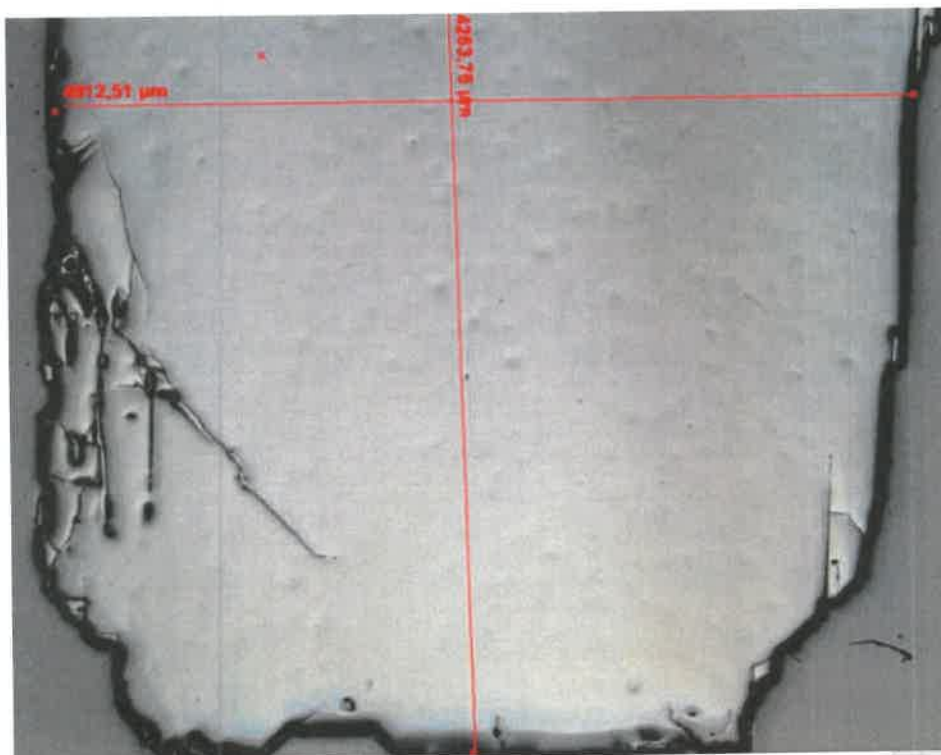
Fused Magnesia – FM 98 LC / "whitish fraction"_grain 7



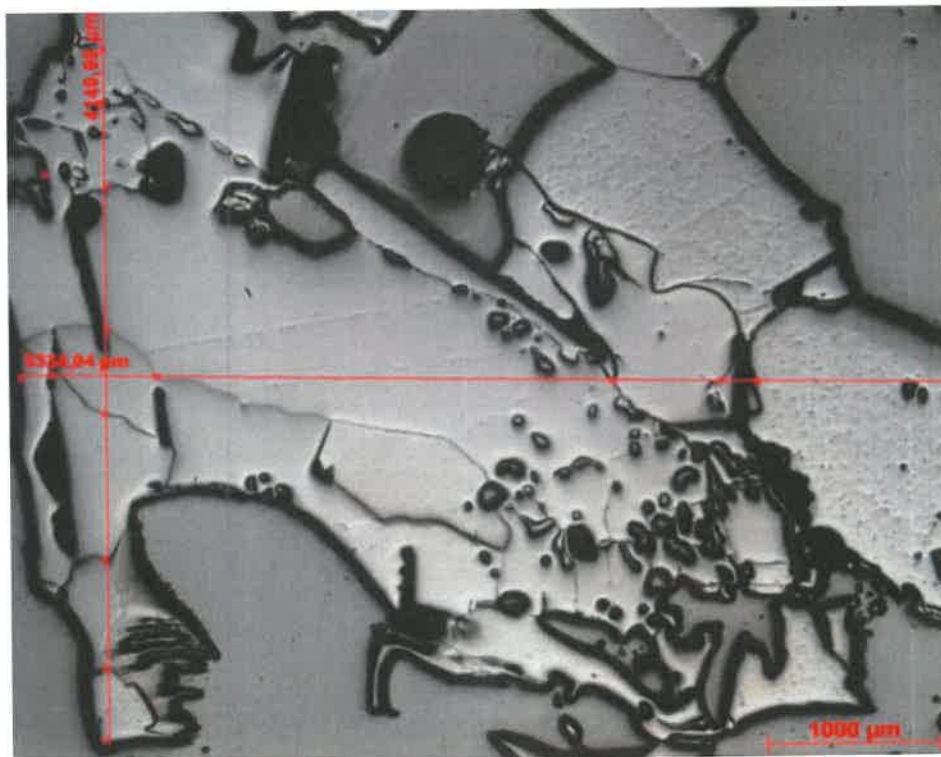
Fused Magnesia – FM 98 LC / "whitish fraction"_grain 8



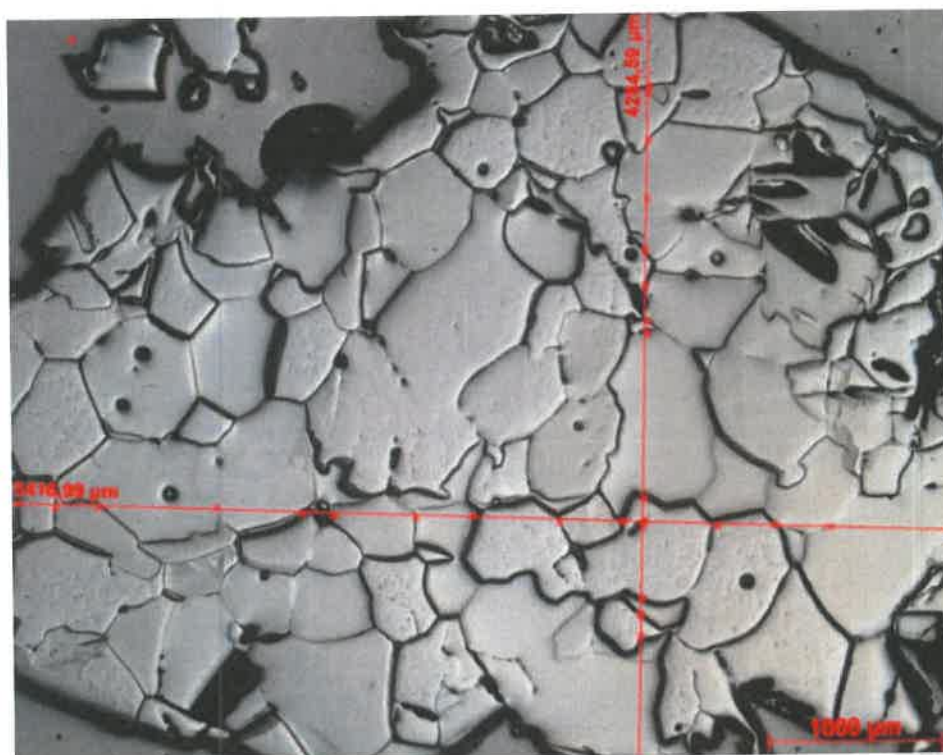
Fused Magnesia – FM 98 LC / "melt fraction"_grain 9



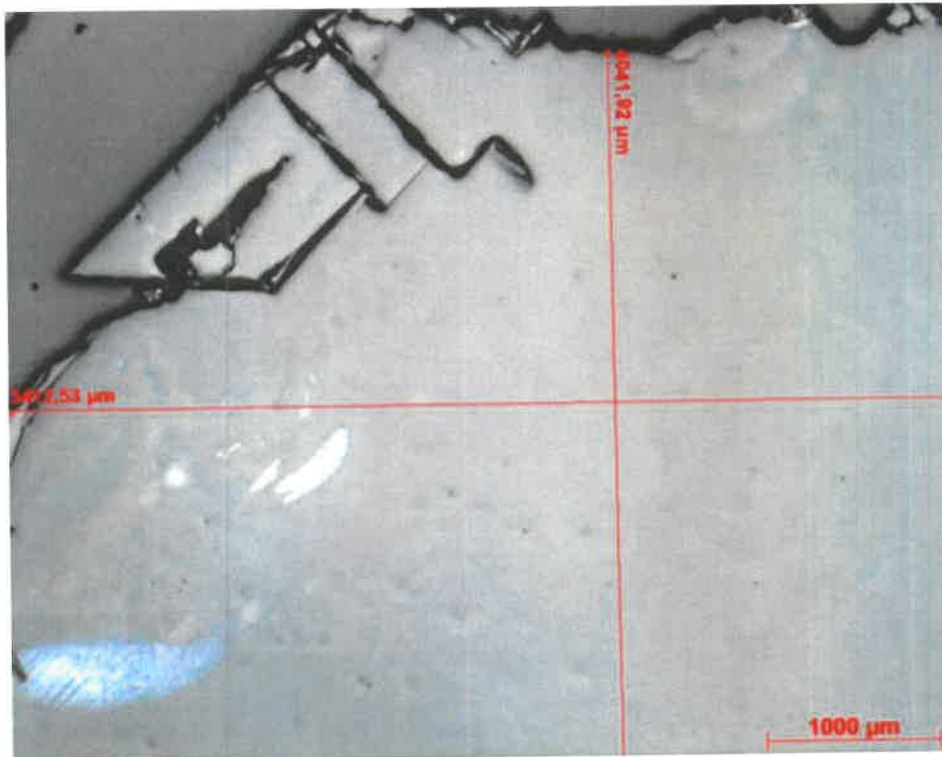
Fused Magnesia – FM 98 LC / "melt fraction"_grain 10



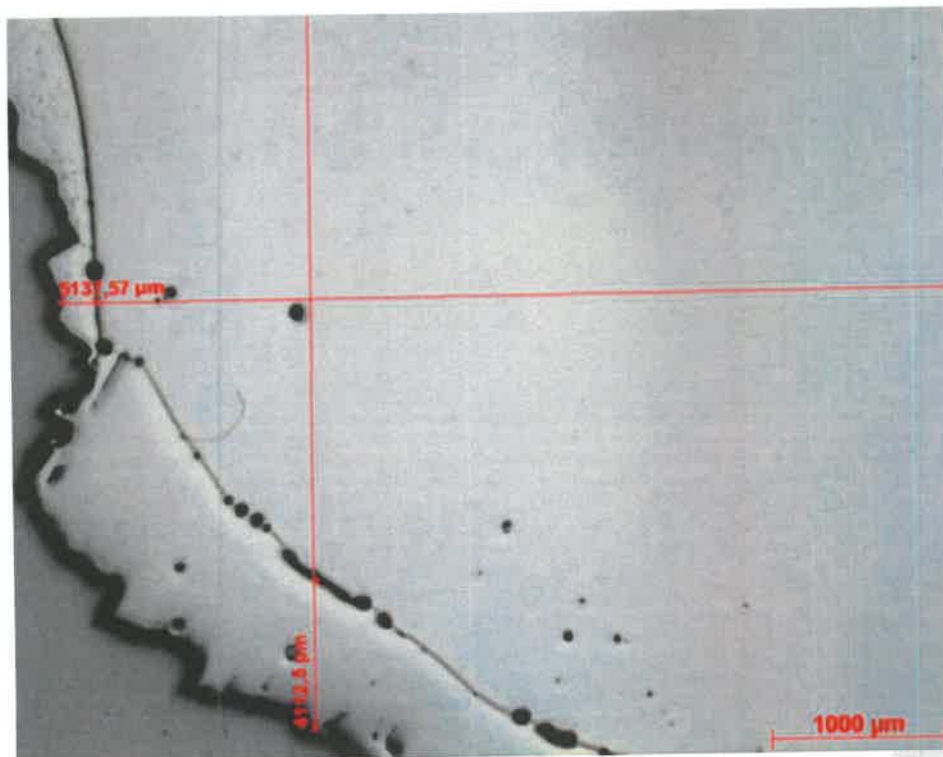
Fused Magnesia – FM 98 LC / "whitish fraction"_grain 11



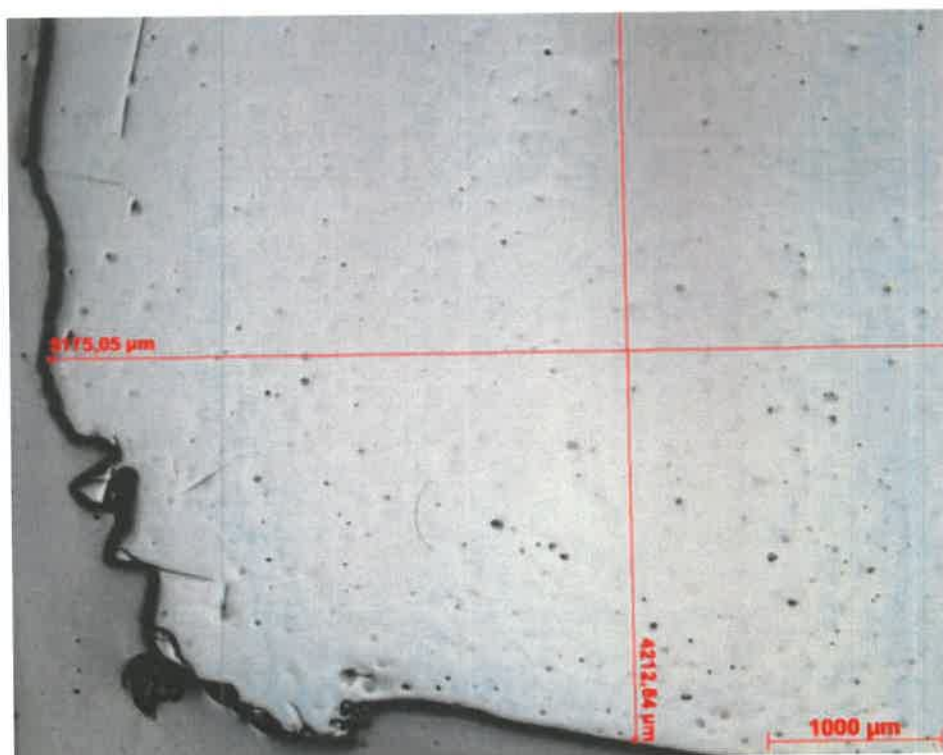
Fused Magnesia – FM 98 LC / "whitish fraction"_grain 12



Fused Magnesia – FM 98 LC / "melt fraction"_grain 13



Fused Magnesia – FM 98 LC / "melt fraction"_grain 14



Fused Magnesia – FM 98 LC / "melt fraction"_grain 15